

# Human HLA-A\*01:01&B2M&MAGE-A3 (EVDPIGHLY) Tetramer Protein

Cat. No. MHC-HM427T

## Description

<b>Source</b>	Recombinant Human MAGE-A3(HLA-A*01:01) Tetramer Protein is expressed from HEK293 with His tag and Avi tag at the C-Terminus, tetramer is assembled by biotinylated monomer and streptavidin. It contains Gly25-Thr305(HLA-A*01:01), Ile21-Met119(B2M) and EVDPIGHLY peptide.
<b>Accession</b>	Q5SUL5(HLA-A*01:01)&P61769(B2M)&EVDPIGHLY
<b>Molecular Weight</b>	The protein has a predicted MW of 258 kDa. Due to glycosylation, the protein migrates to 260-265 kDa under Non reducing (N) condition based on Bis-Tris PAGE result.
<b>Endotoxin</b>	Less than 1EU per µg by the LAL method.
<b>Purity</b>	> 95% as determined by Bis-Tris PAGE > 95% as determined by HPLC

## Formulation and Storage

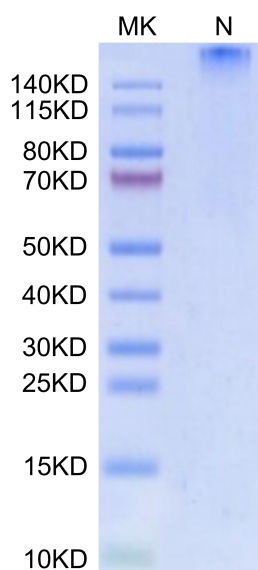
<b>Formulation</b>	Lyophilized from 0.22µm filtered solution in PBS (pH 7.4). Normally 8% trehalose is added as protectant before lyophilization.
<b>Reconstitution</b>	Centrifuge the tube before opening. Reconstituting to a concentration more than 100 µg/ml is recommended. Dissolve the lyophilized protein in distilled water.
<b>Storage</b>	-20 to -80°C for 12 months as supplied from date of receipt. -80°C for 3 months after reconstitution. Recommend to aliquot the protein into smaller quantities for optimal storage. Please minimize freeze-thaw cycles.

## Background

Melanoma antigen gene A3 (MAGE-A3) is one of the most immunogenic cancer testis antigens and is common in various types of cancers. MAGE-A3 can be considered as a predictor for poor prognosis and an option for vaccine immunotherapy in patients with PCa.

## Assay Data

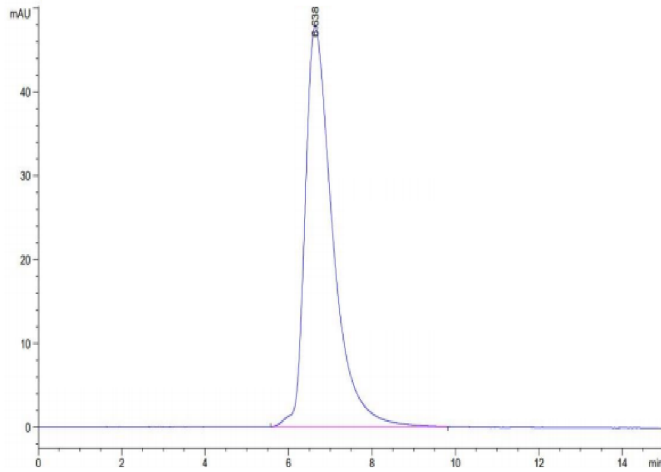
### Bis-Tris PAGE



Human HLA-A\*01:01&B2M&MAGE-A3 (EVDPIGHLY) Tetramer on Bis-Tris PAGE under Non reducing (N) condition. The purity is greater than 95%.

### SEC-HPLC

Assay Data



The purity of Human HLA-A\*01:01&B2M&MAGE-A3 (EVDPIGHLY) Tetramer is greater than 95% as determined by SEC-HPLC.